

State of S. Carolina

(219)

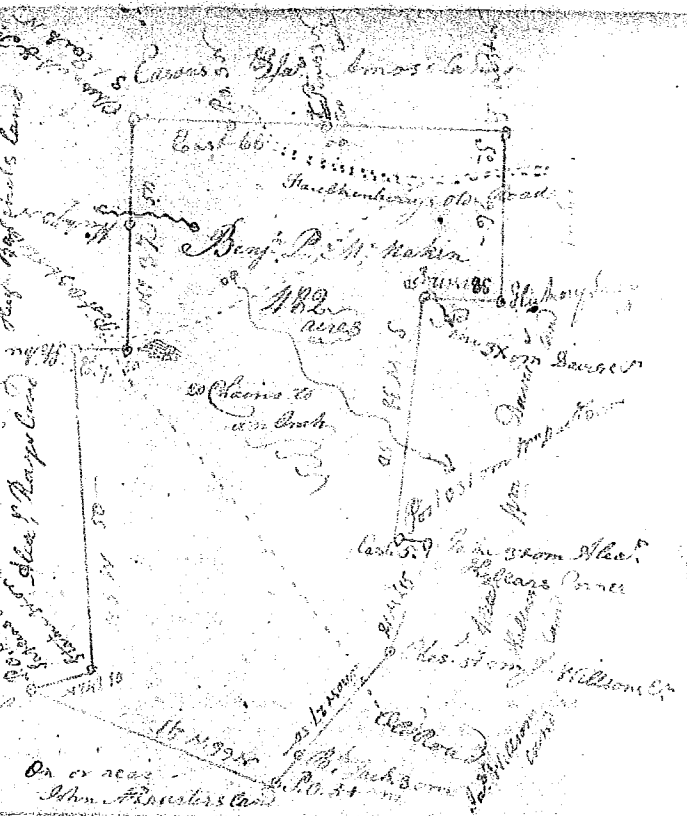
Pursuant to a warrant from John Thomas Esq. Comr. of the Co. of Saluda & E. of the 27th Decr 1792. I have admeasured & laid out unto Benjamin Price W. Mehin a tract of land situate in Spartanburg County, South Carolina. On a small tract of 1/2 of 1/2 of some tracts of the North fork of Sugar River in Spartanburg County, bounded by lines running N. 40° E. 80° by Hugh Barntin, East by Edson & J. P. Mossland, S. unknown, S. 80° E. 80° W. by William Davis, S. W. 1/2 of William Davis, S. W. 1/2 of James Willson, N. 60° W. or near John Mayers, N. E. & N. W. by Alca, Thays Land, & hath such form and marks as the above plat represents.

Surveyed the 8th Decr 1792

Wm Thomas Esq.

Recorded the 8th Decr 1792

On or near John Mayers Land



State of South Carolina Pursuant to a warrant from John Thomas Esq. Comr. of the Co. of Saluda & E. of the 10th Decr 1792. I have admeasured and laid out unto Charles Holt, a tract of one hundred and eighty acres of land situate in Spartanburg County Union County, N. side Saluda River, bounded by David Punks land and Durey Punks land E. by Lydson Bogans land, N. W. by James Battersons land, and all other sides by vacant land, and hath such form and marks as the above Plat represents, Surveyed 10th Decr 1792

Recorded 17th Decr 1792 Del. self. Hunt Lancaster Del



State of S. Carolina Pursuant to a warrant from John Thomas Esq. Comr. of the Co. of Saluda & E. of the 15th Decr 1792, I have admeasured and laid out unto Aaron Floyd a tract of land containing one hundred and ninety five acres in Spartanburg County, between the South & N. forks of Sugar river bounded by some lands E. by 1/2 of 1/2 of Stravids wards lands by the S. fork of Sugar river, N. by the North fork of Sugar river, and hath such shape, form and marks as the above Plat represents, Surveyed 17th Decr 1792

Recorded 18th Decr 1792, Del. self. and Thomson Del

